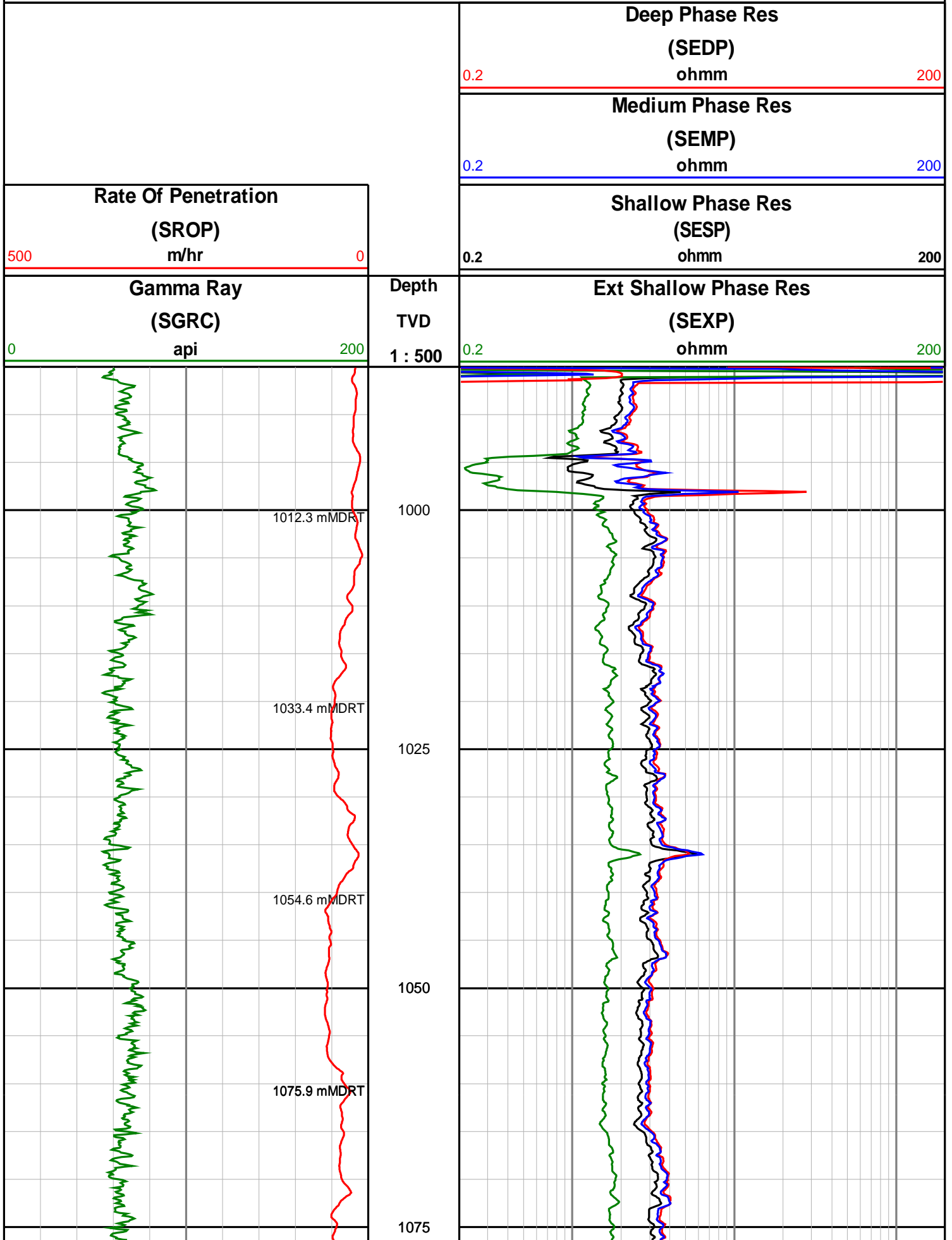
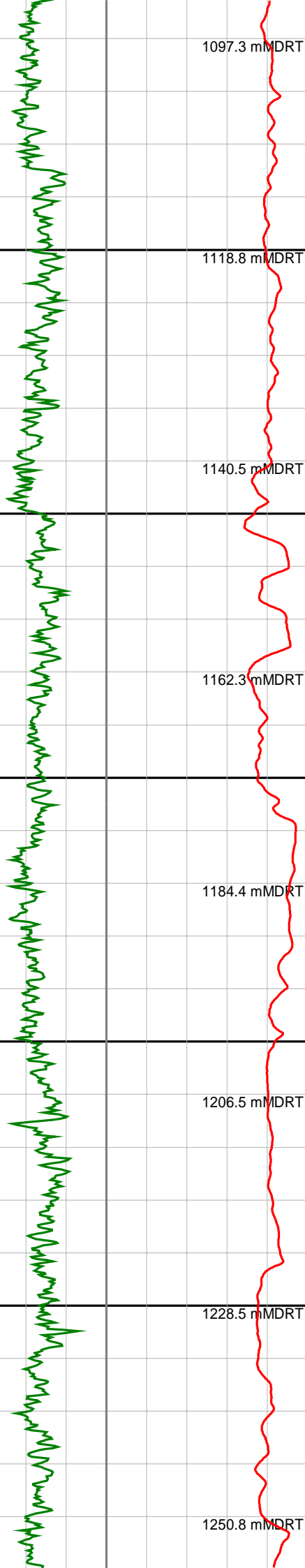


Anzon Australia Ltd

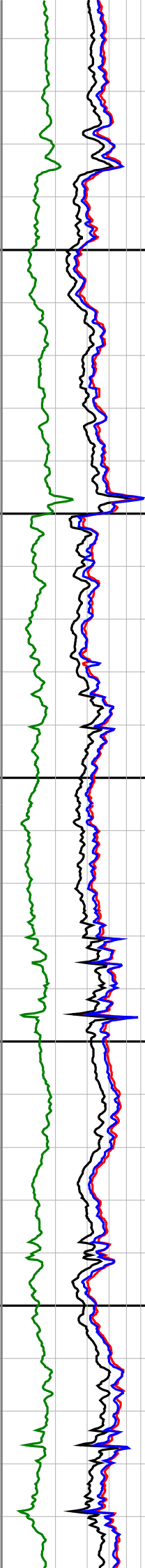
Basker-4

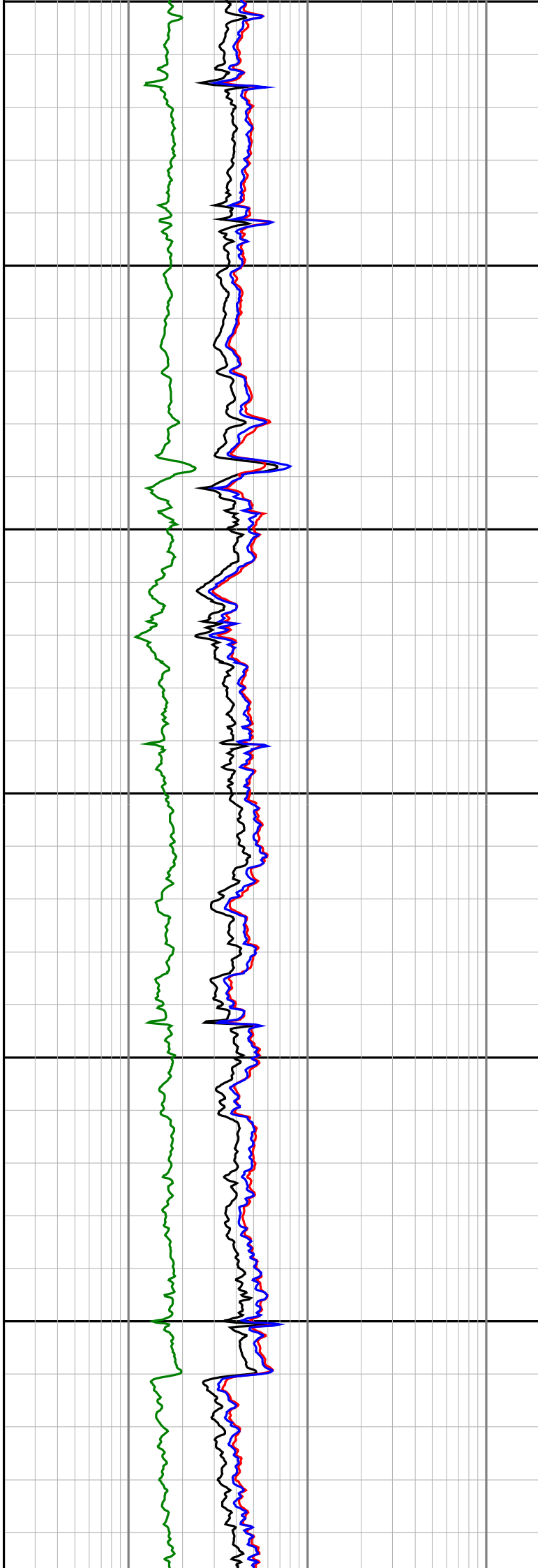
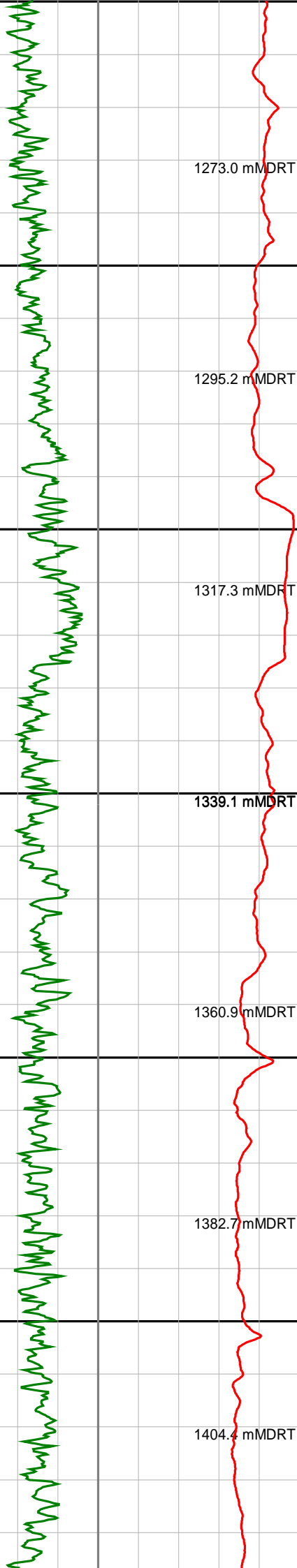
Realtime LWD Log (Permanent Datum - LAT)

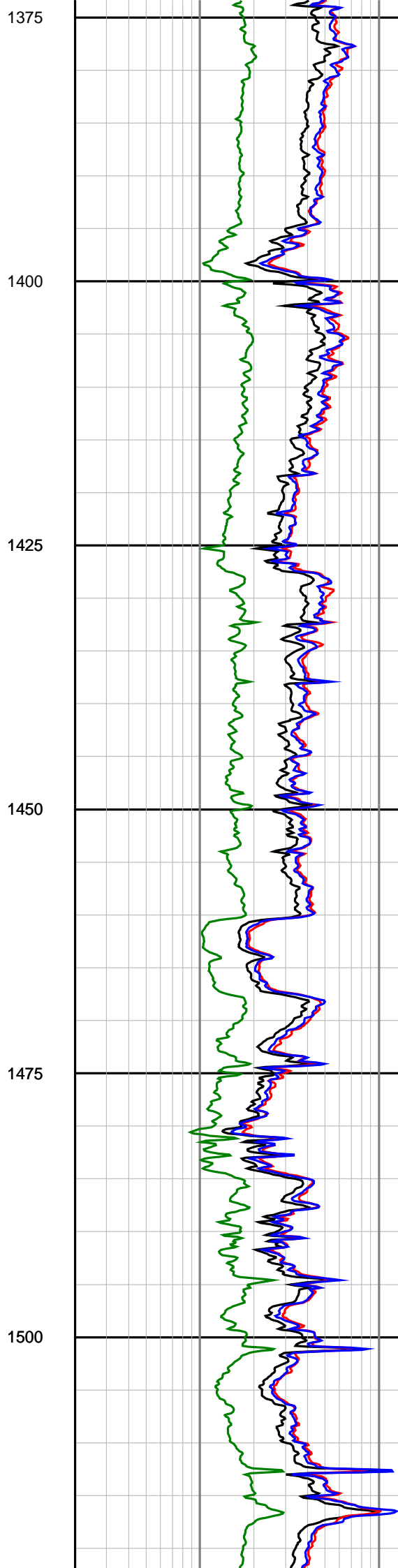
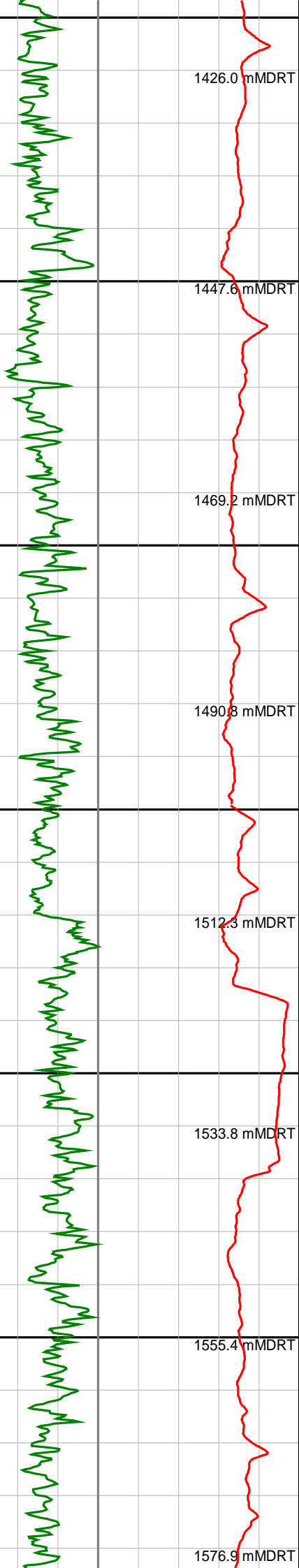


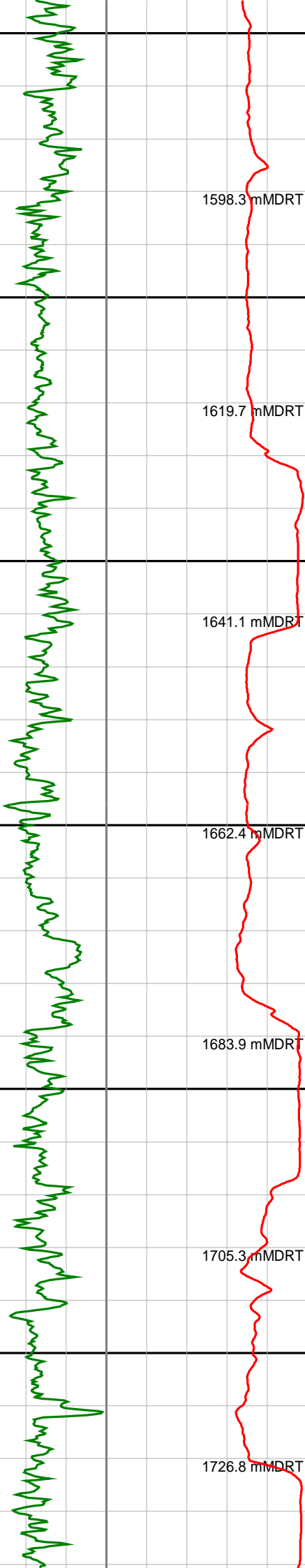


1100
1125
1150
1175
1200
1225









1598.3 mMDRT

1619.7 mMDRT

1641.1 mMDRT

1662.4 mMDRT

1683.9 mMDRT

1705.3 mMDRT

1726.8 mMDRT

1525

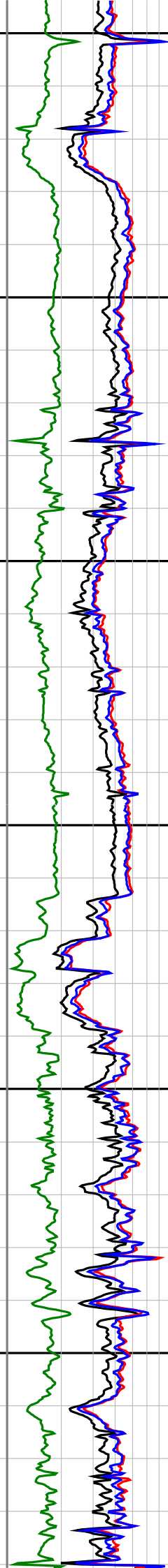
1550

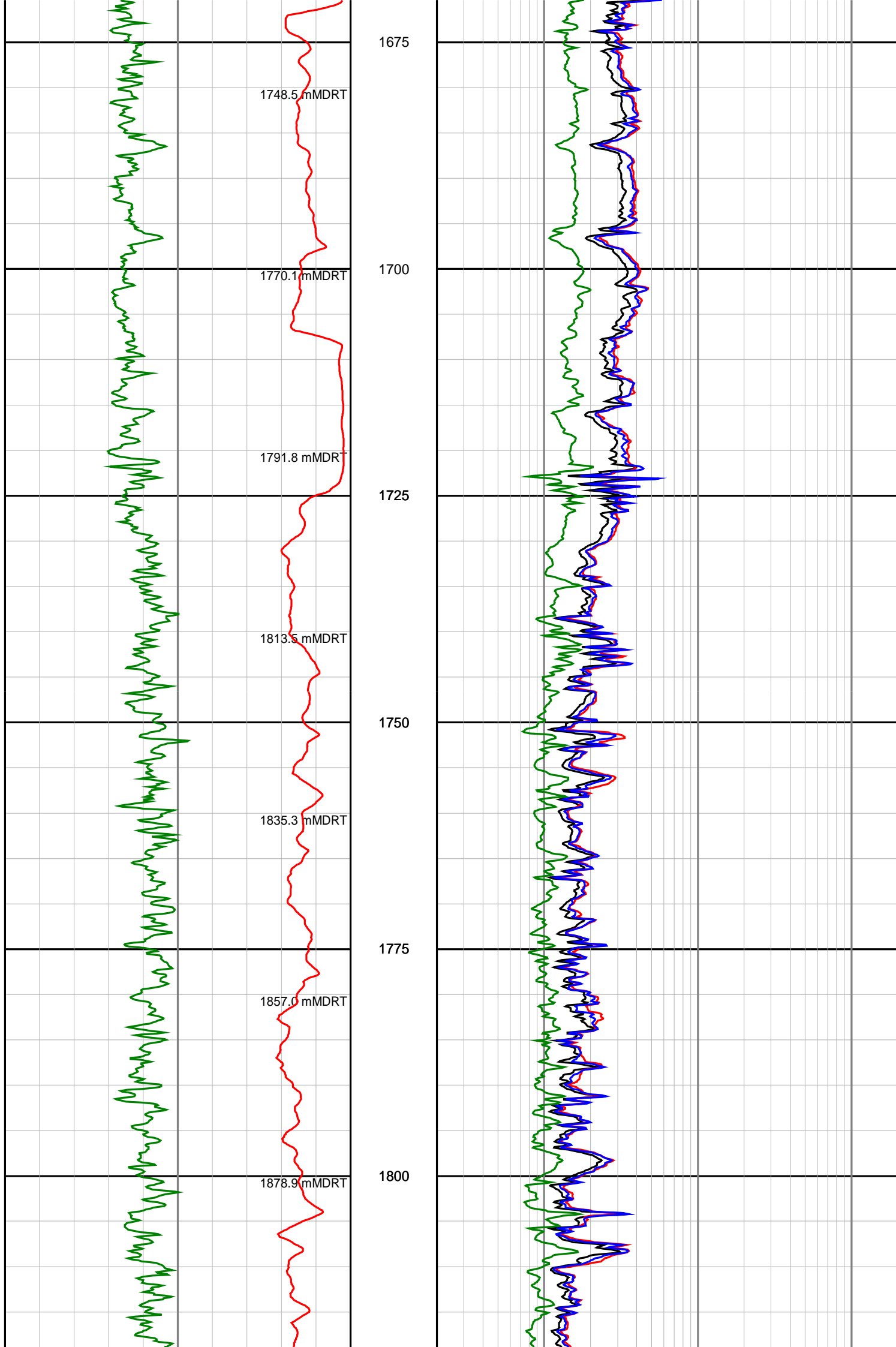
1575

1600

1625

1650





1900.6 mMDRT

1922.3 mMDRT

1944.0 mMDRT

1965.6 mMDRT

1987.2 mMDRT

2008.8 mMDRT

2030.4 mMDRT

2052.1 mMDRT

1825

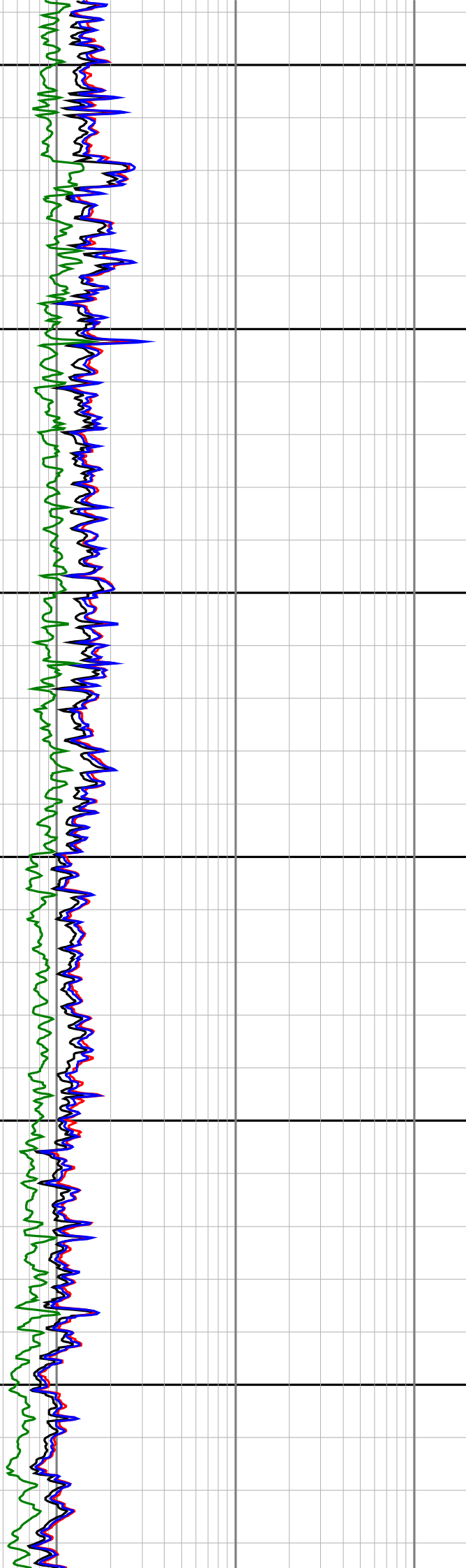
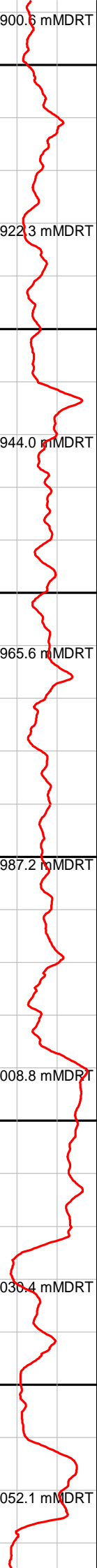
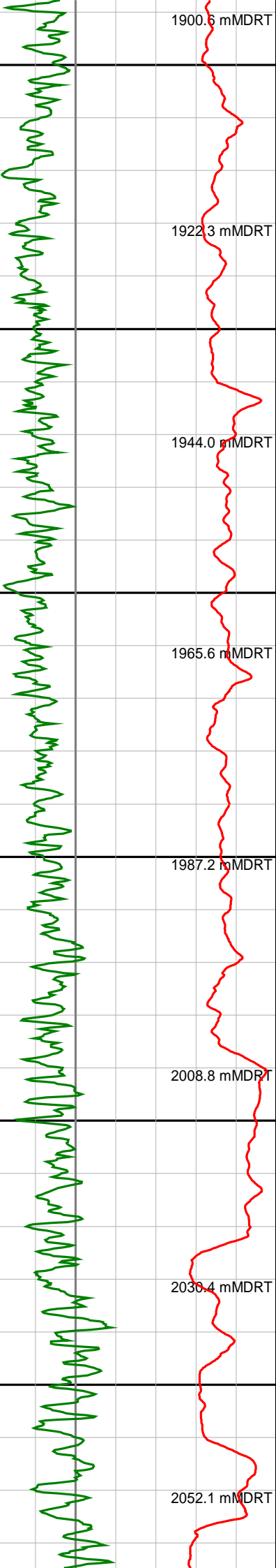
1850

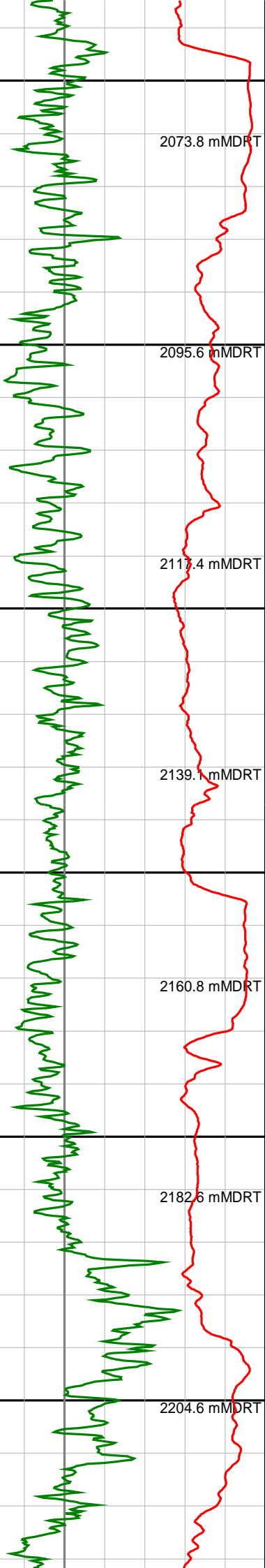
1875

1900

1925

1950





2073.8 mMDRT

2095.6 mMDRT

2117.4 mMDRT

2139.1 mMDRT

2160.8 mMDRT

2182.6 mMDRT

2204.6 mMDRT

1975

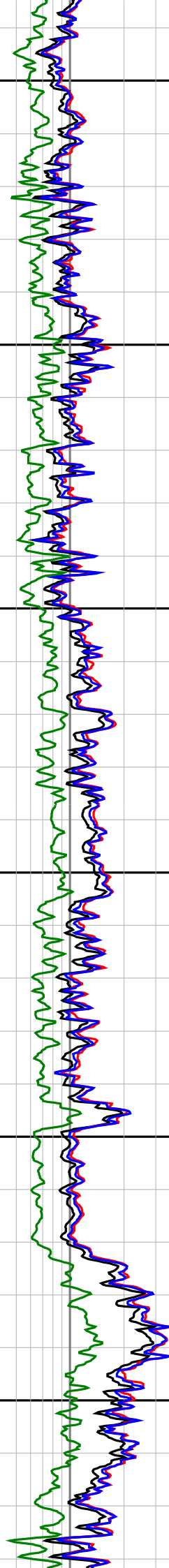
2000

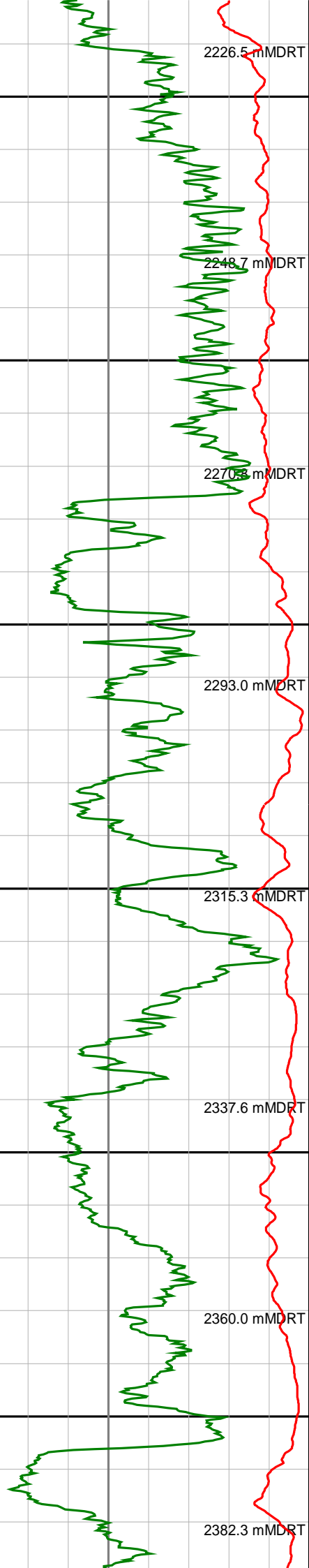
2025

2050

2075

2100





2125

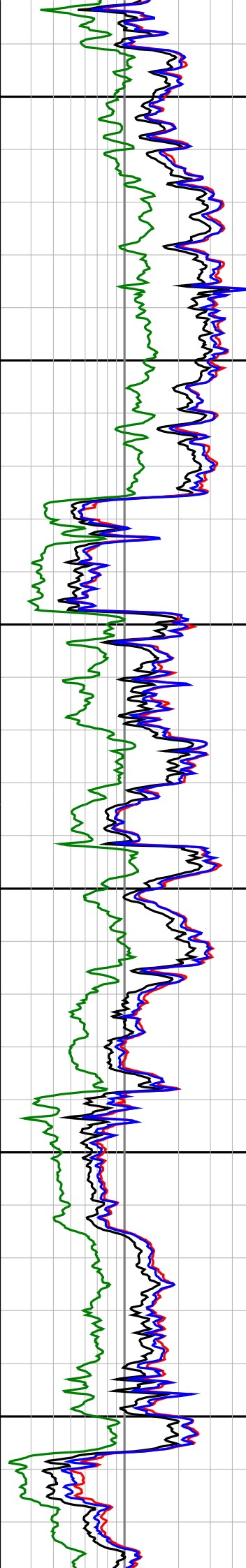
2150

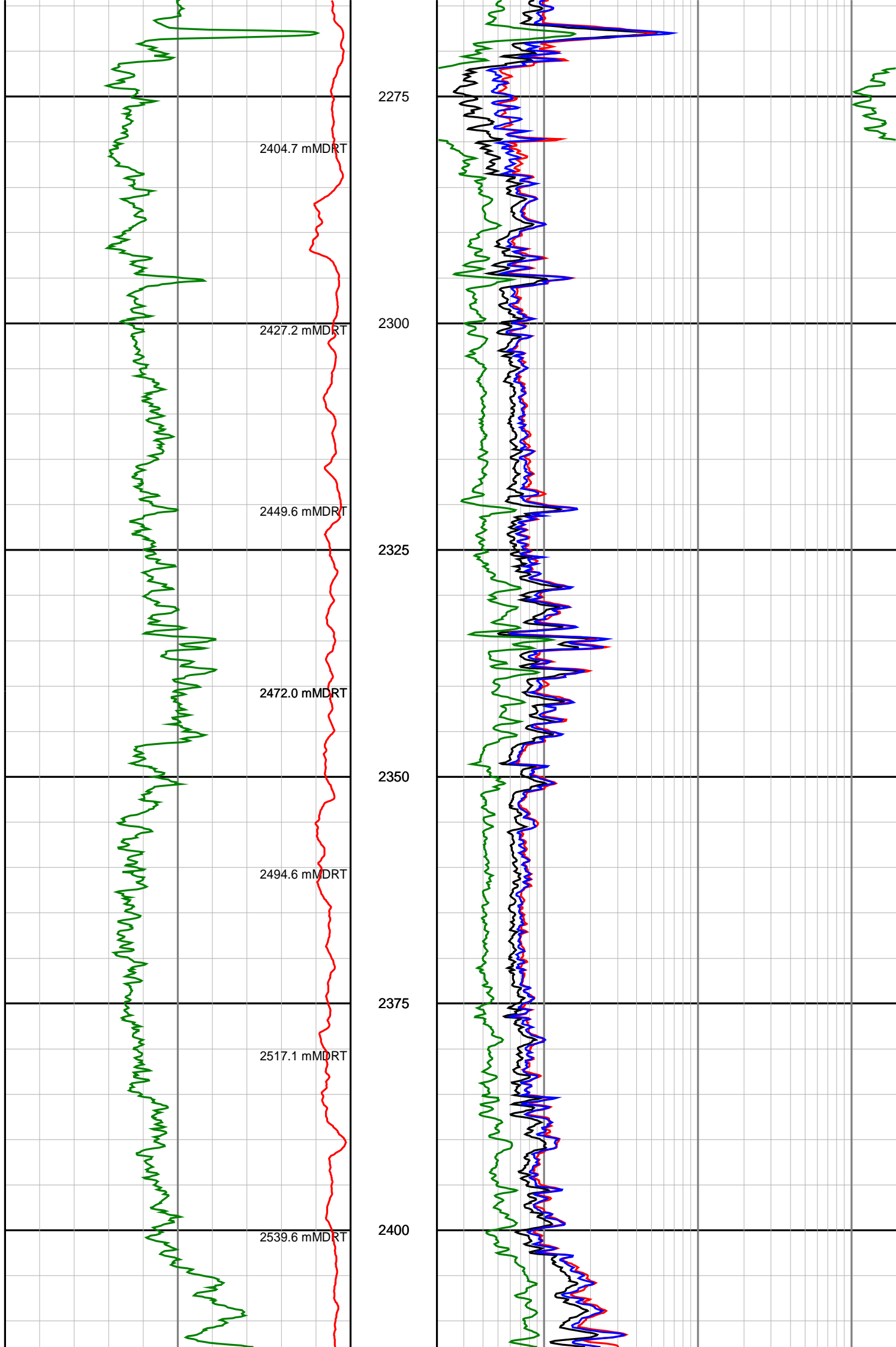
2175

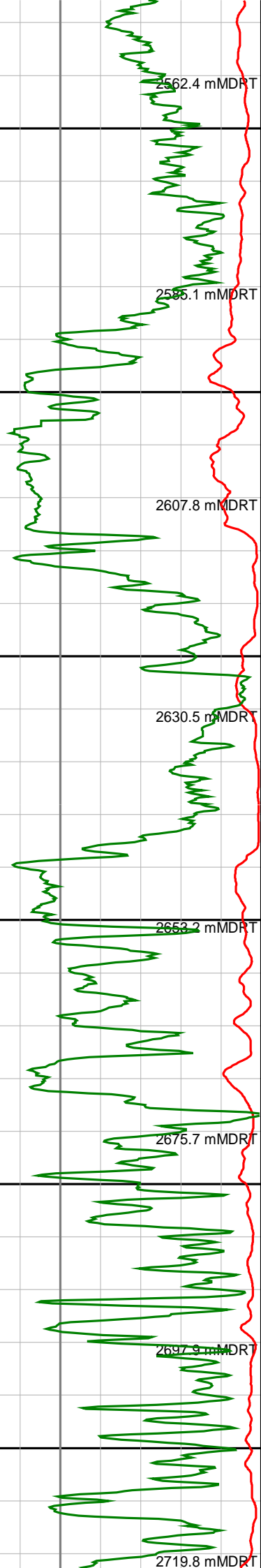
2200

2225

2250







2425

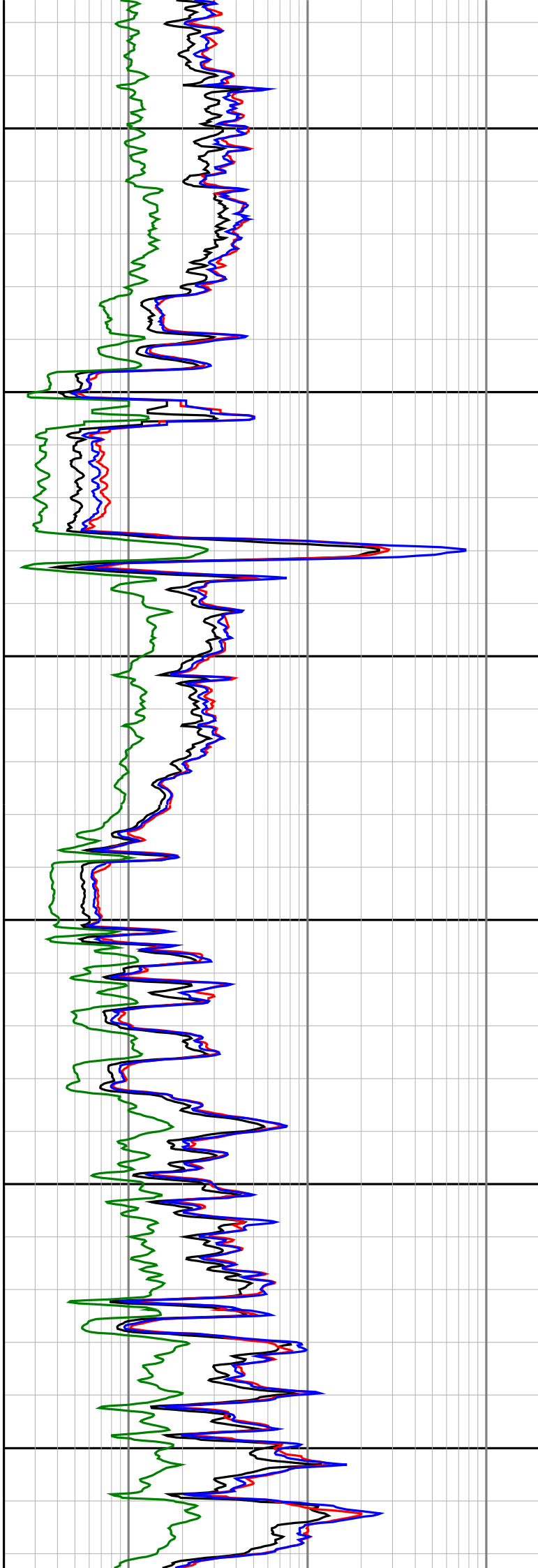
2450

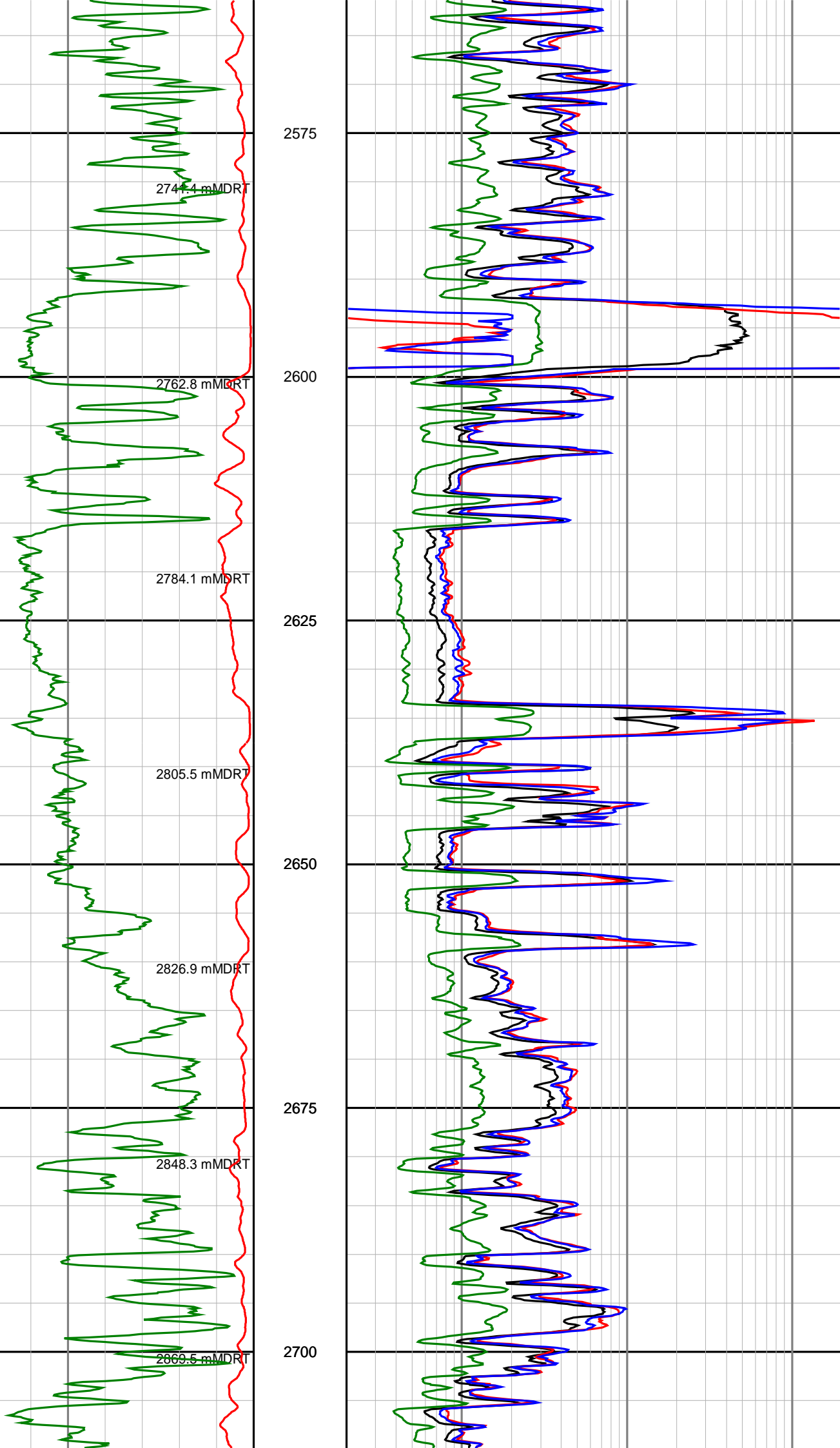
2475

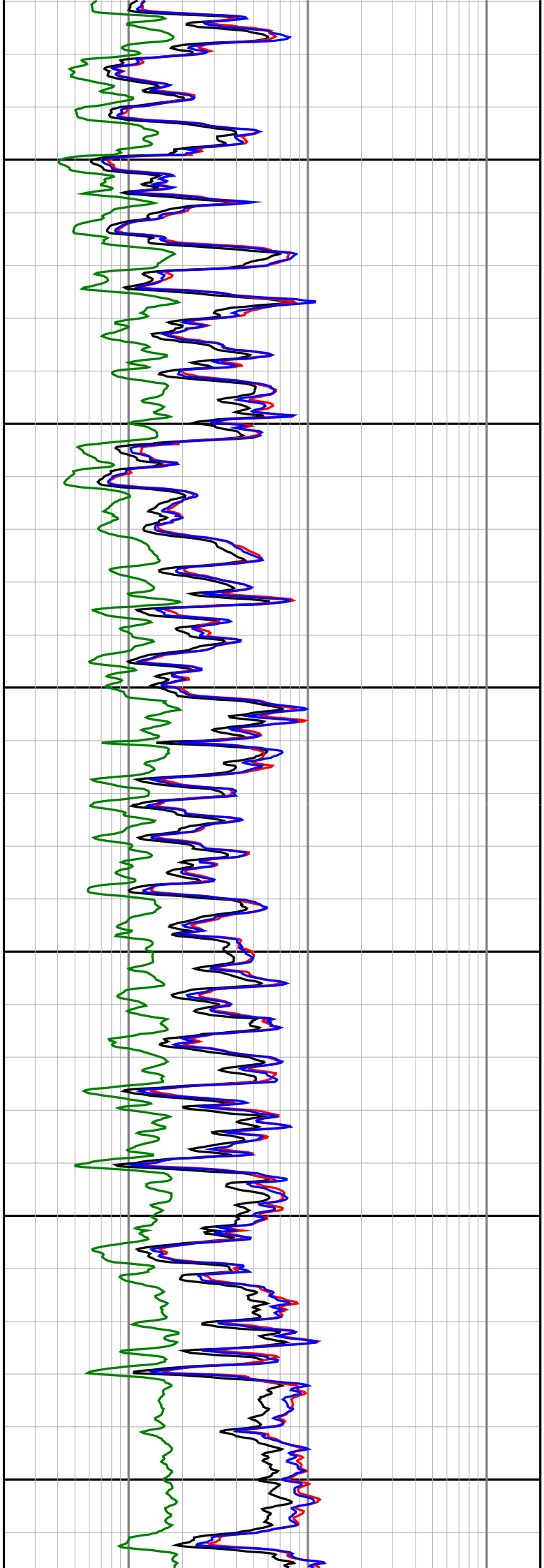
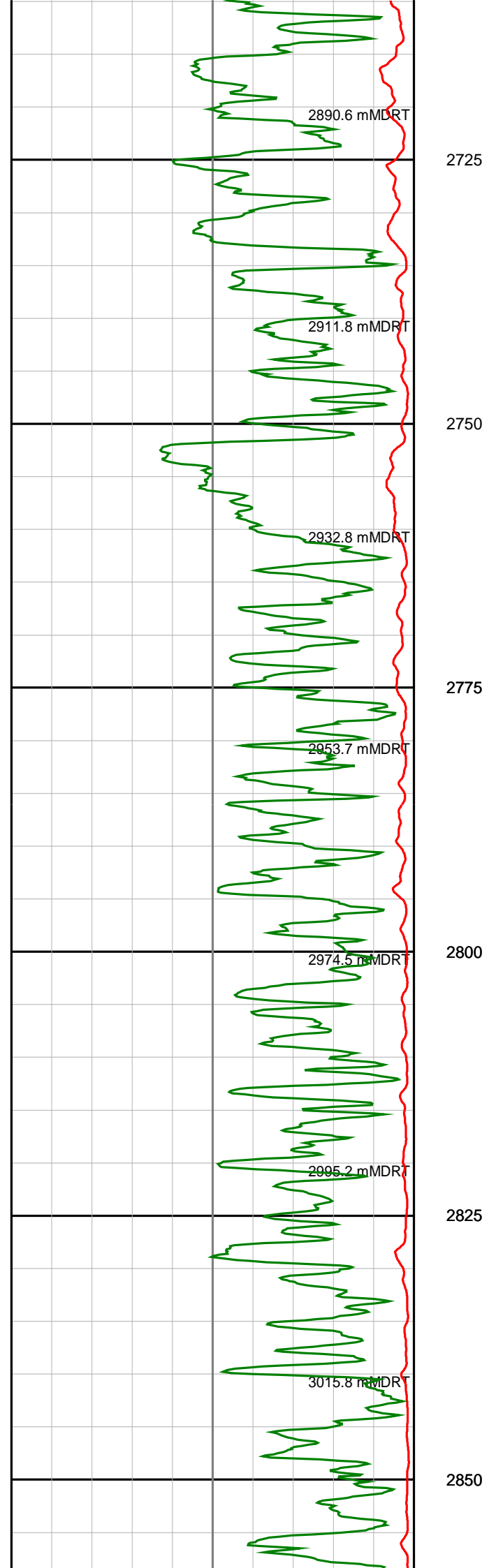
2500

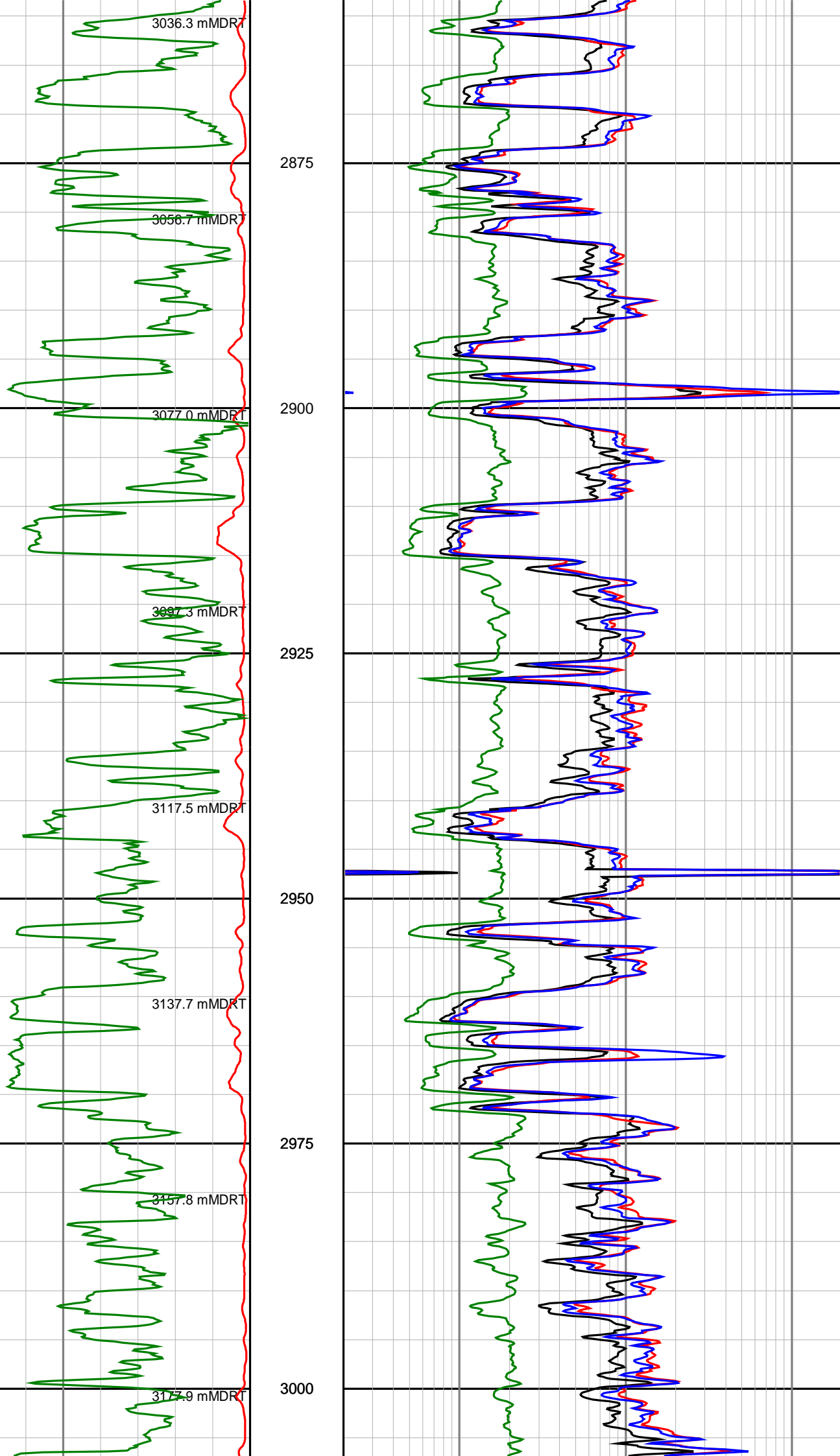
2525

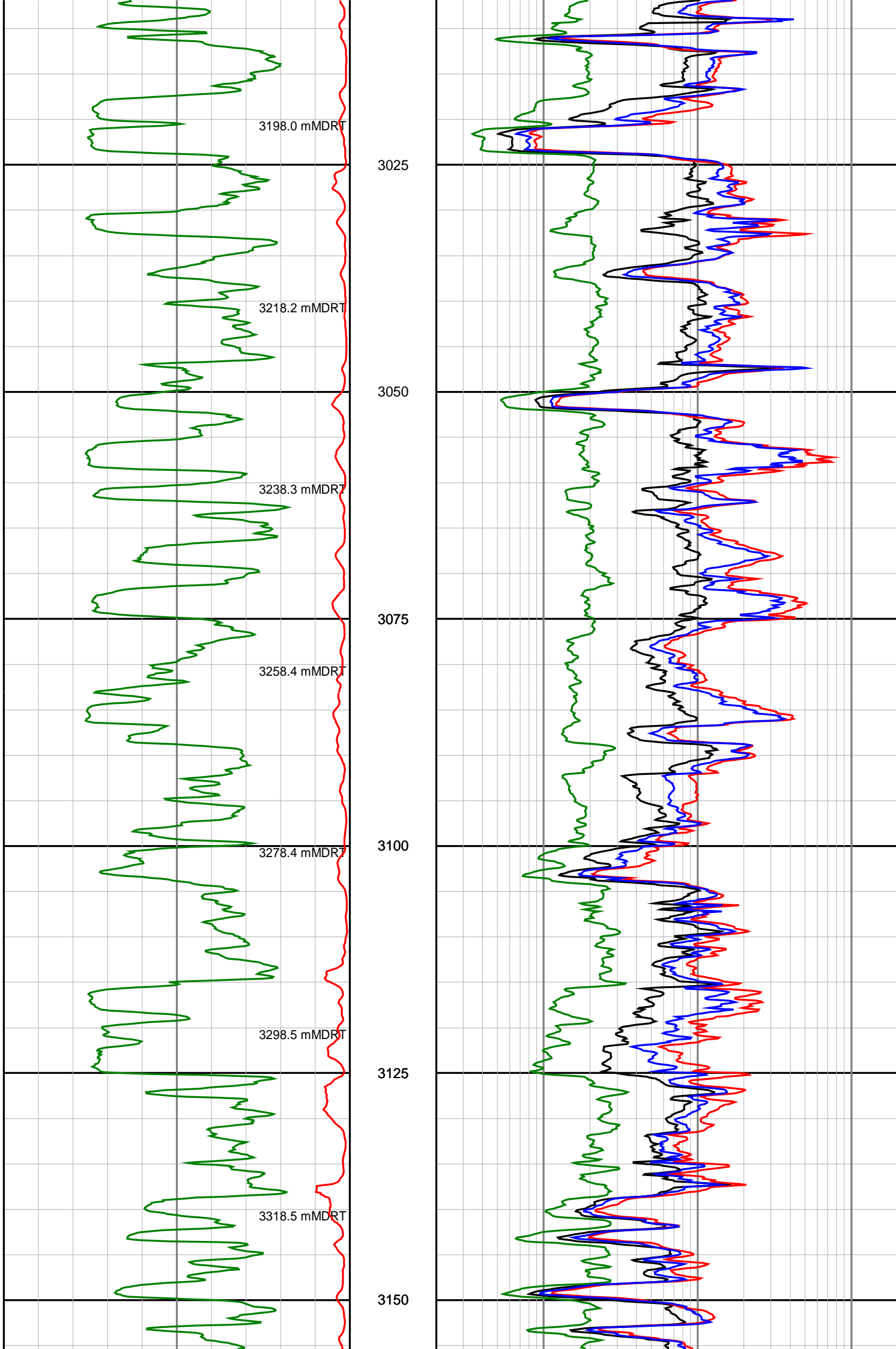
2550

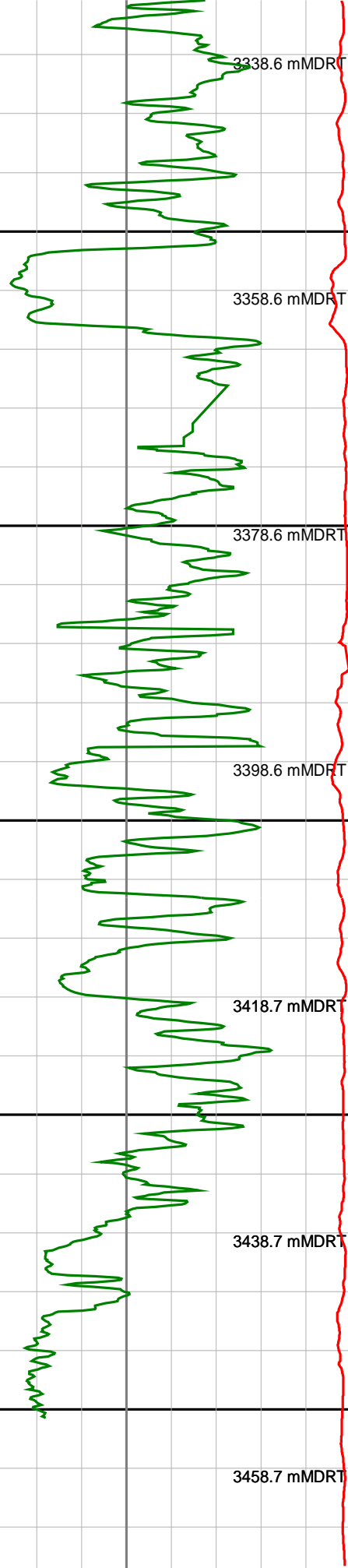












3175

3200

3225

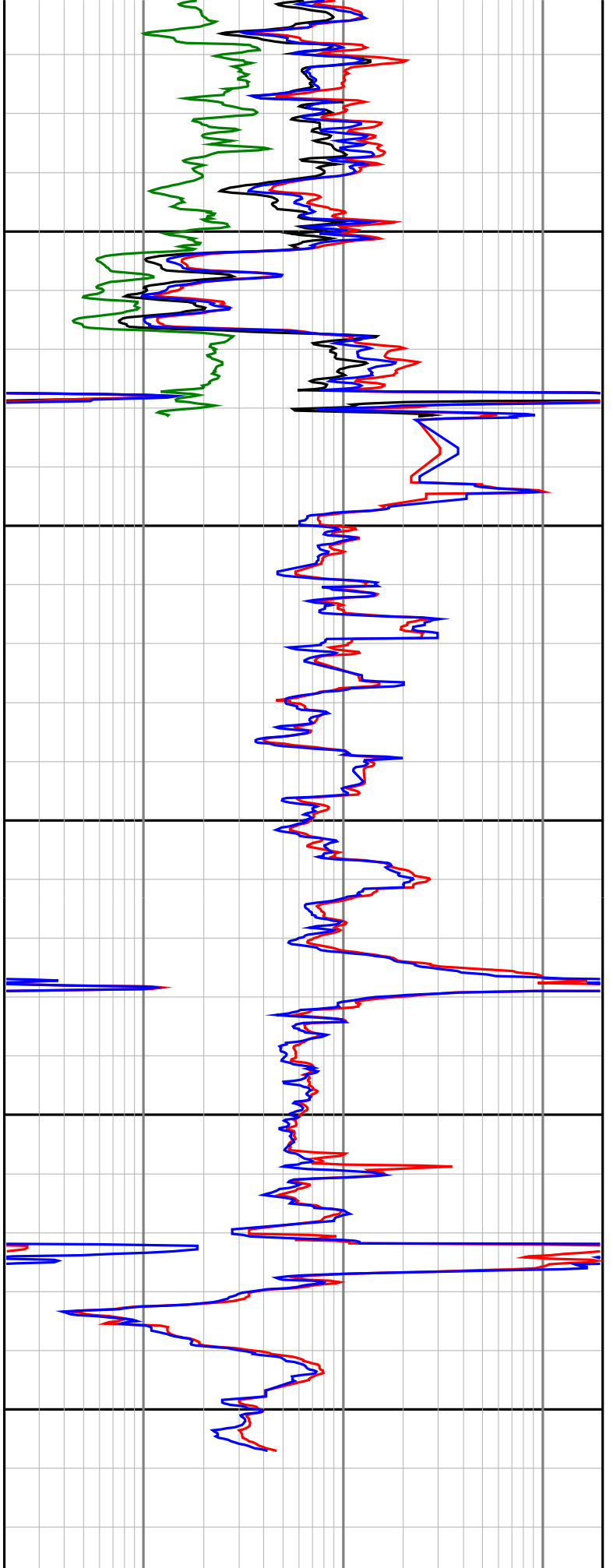
3250

3275

3300

Gamma Ray

Depth



Ext Shallow Phase Res

<p>(SGRC) api</p> <p>0 200</p>	<p>TVD 1 : 500</p>	<p>(SEXP) ohmm</p> <p>0.2 200</p>
<p>Rate Of Penetration (SROP) m/hr</p> <p>500 0</p>		<p>Shallow Phase Res (SESP) ohmm</p> <p>0.2 200</p>
		<p>Medium Phase Res (SEMP) ohmm</p> <p>0.2 200</p>
		<p>Deep Phase Res (SEDP) ohmm</p> <p>0.2 200</p>